



Oil and Water Don't Mix:
The Fight to Save the
Great Lakes




Enbridge and Michigan

- Enbridge spilled 1.1 million gallons into the Kalamazoo oil spill after claiming their faulty pipeline was safe
- Kalamazoo pipeline ruptured -- causing one of the worst inland oil spills in U.S. history
- The spill dumped one million gallons of oil into the river, threatening our residents' health and drinking water



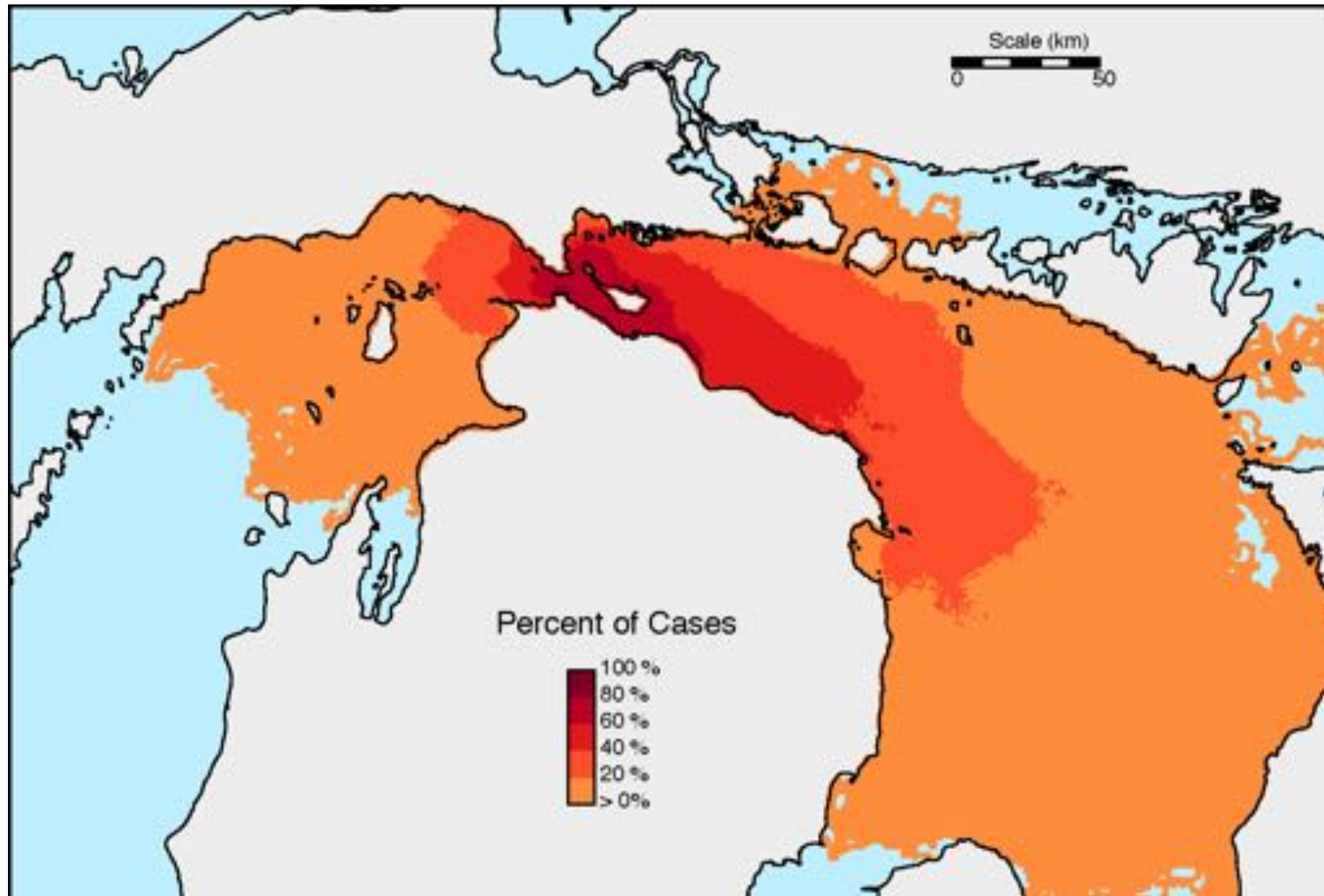
Governor Whitmer's plan to shut down the Line 5 pipeline is the right thing to do – **taking a proactive approach to defuse a ticking time bomb and protect the health and safety of Michiganders.**

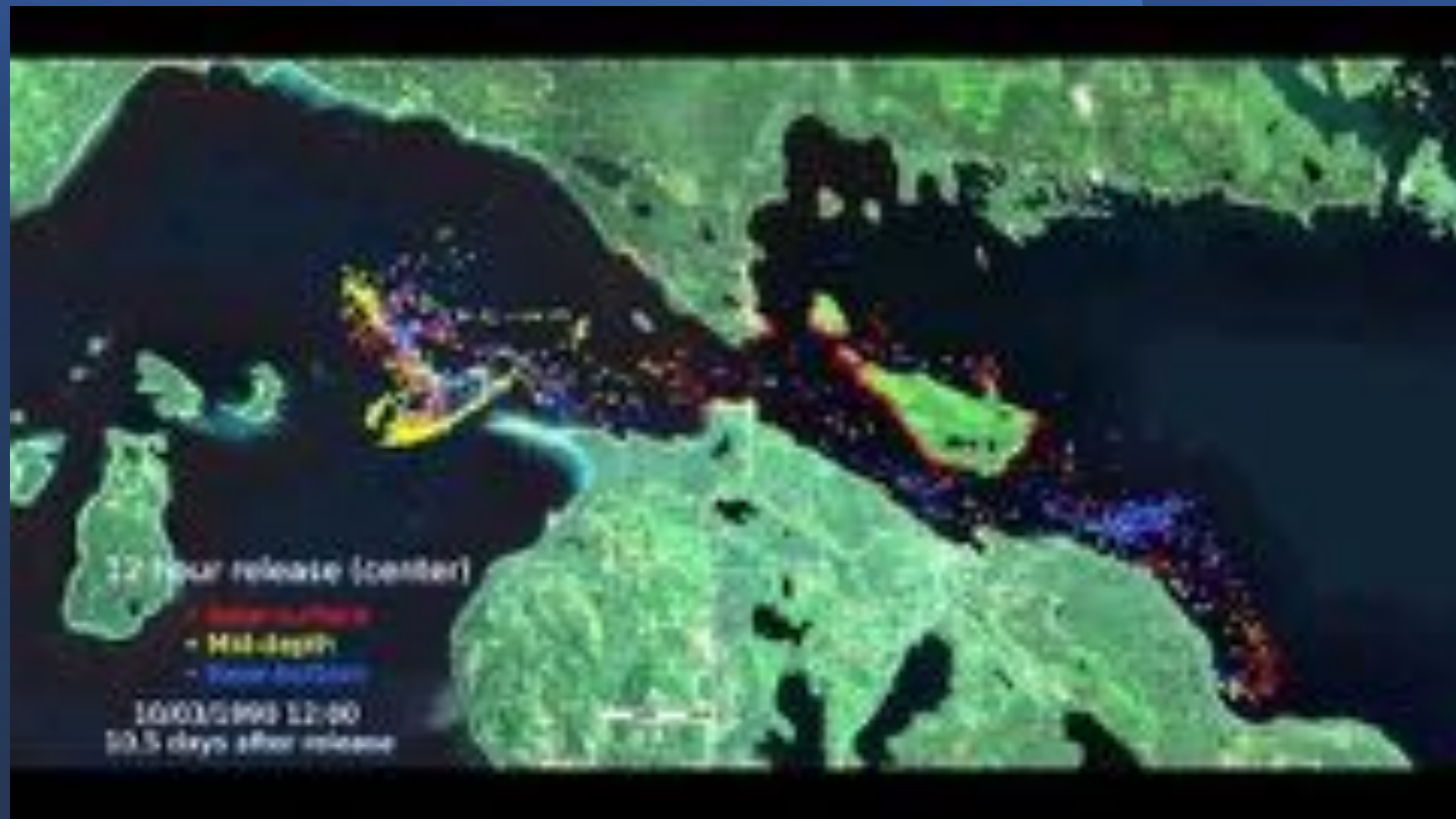
A map of the Great Lakes region in the United States, showing Lake Superior, Lake Michigan, and Lake Huron. A thick black line represents the route of Line 5, which runs from the northwest coast of Lake Superior, through the western shore of Lake Michigan, and then down the western coast of Lake Huron. Numerous green tree icons are placed along this route, indicating the locations of oil spills. Labels on the map include 'Superior', 'Sault Ste Marie', 'Lake Michigan', 'Lake Huron', 'WISCONSIN', 'MICHIGAN', 'Madison', 'Milwaukee', 'Grand Rapids', and 'Lansing'.

Line 5: At least 33
spills so far

- over 1 million gallons spilled since 1968

Line 5 Oil Spill Impacts





Line 5 Economic Report

OIL SPILL ECONOMICS

Estimates of the Economic Damages of a
Potential Oil Spill in the Straits of Mackinac

"A rupture of this pipeline... has the potential to inflict
economic damages that are significant, if not catastrophic."
-Dr. Robert Richardson, ecological economist, MSU



\$6.3 BILLION
in economic impacts,
damages & restoration



\$4.8 BILLION

in economic damages to the tourism economy



\$697.5 MILLION

in costs for natural resource damages and restoration



\$485 MILLION

in economic damages to coastal property values

Governor Whitmer's order to shut down Line 5

Michigan granted an easement to operate Line 5 in public trust waters in 1953

After an 18-month review of easement violations, Governor Whitmer revoked the easement and gave Enbridge 180 days to shut down Line 5

Enbridge intends to violate state law by operating Line 5 after May 13, 2021 until the state gets a court order to shut it down

Enbridge is arguing that the state had the right to issue the easement, but not to revoke it

Tunnel Permits: Where we are now

Michigan EGLE issued permits for tunnel in January 2021- These are being challenged by Bay Mills Indian Community

Permits are still needed from US Army Corps of Engineers and approval from Michigan Public Service Commission (MPSC)

Army Corps and MPSC will likely both be making more substantial reviews than EGLE

Tunnel Issues

- The tunnel proposal leaves over 400 Great Lakes water crossings vulnerable
- Enbridge has already cut corners on geotechnical research which could lead to major problems in construction
- As the climate crisis accelerates, building an oil tunnel beneath 20% of the world's fresh surface water is not an idea that would be beneficial to anyone other than those who profit by keeping us dependent on fossil fuels



Next Steps: How to get involved!

- Join Oil and Water Don't Mix!
- Make a selfie video and send it to us
- Sign our petition to President Biden
- Write a letter to the editor
- Learn our presentations and educate others
- Write a thank you email to Governor Whitmer- Gretchen.whitmer@michigan.gov



Questions?

- www.oilandwaterdontmix.org
- @OilWaterDntMix
- Email smcbrearty@cleanwater.org for more info or to schedule a presentation!